

# saferbromley partnership

Contact for this Agenda: Kerry Nicholls  
Tel: 020 8313 4602  
E-mail: [kerry.nicholls@bromley.gov.uk](mailto:kerry.nicholls@bromley.gov.uk)  
London Borough of Bromley  
28 February 2012

To: Members of the

## saferbromley partnership

### STRATEGIC GROUP

Councillor Tim Stevens J.P. (Chairman)  
Rob Clarke, (London Probation Service)  
James Cleverly, (Mayor's Office for Policing and Crime)  
Sue Cooper, (Affinity Sutton)  
Nigel Davies, (LBB Director, Environmental Services)  
Clive Davison, (LBB Assistant Director, Public Protection)  
Andrew Holcombe, (Borough Commander, Fire Services)  
Colin Maclean, (Community Links Bromley)  
Ulanta Messeter, (Magistrates Court)  
Paula Morrison, (Assistant Director, Public Health)  
Colin Newman, (LBB Head of Community Safety)  
Jo Oakley, (Deputy Borough Commander)  
Howard Oldstein, (The Glades)  
Doug Patterson, (LBB Chief Executive)  
Lulu Pearce, (Ethnic Communities Programme Manager)  
Tracy Pidgeon, (London Ambulance Service)  
Stephanie Roberts, (Borough Police Commander)  
Gill Rose, (Federation of Bromley Housing Associations)  
Simon Schutte, (UK Border Agency)  
Selene Grandison, (SE London Probation Service)  
Ian Smith, (Bromley Community Engagement Forum)  
Sarah Walker, (Mayor's Office for Policing and Crime)  
Non Voting Members: Councillor Reg Adams and Councillor Julian Benington

**A meeting of the Safer Bromley Partnership Strategic Group will be held at Bromley Education Development Centre, Church Lane, Princes Plain, BR2 8LD on THURSDAY 8 MARCH 2012 at 10.00 am**

### A G E N D A

- 1 INTRODUCTIONS / APOLOGIES FOR ABSENCE
- 2 MINUTES OF LAST MEETING: 15TH DECEMBER 2011/ MATTERS ARISING  
(Pages 3 - 10)

- 3 **BOROUGH COMMANDER'S UPDATE (VERBAL UPDATE)**
- 4 **PERFORMANCE MANAGEMENT REPORT (2011/2012)** (Pages 11 - 20)
- 5 **TACKLING GANGS INITIATIVE**
  - a **TACKLING GANGS IN BROMLEY** (Pages 21 - 24)
  - b **TACKLING TROUBLED FAMILIES PROGRAMME** (Pages 25 - 28)
- 6 **SAFER BROMLEY "CLEAN UP"** (Pages 29 - 30)
- 7 **SUPPORT GROUP UPDATES (VERBAL UPDATES)**
  - Drug Action Team
  - Youth Offending Team
  - Bromley Community Engagement Forum
  - Arson Sub Group
  - Operational Tasking
- 8 **SAFER BROMLEY PARTNERSHIP FUNDING 2012/13** (Pages 31 - 36)
- 9 **OUTCOME OF CCTV TENDER (VERBAL UPDATE)**
- 10 **SAFEGUARDING OLDER PEOPLE (VERBAL UPDATE)**
- 11 **COMMUNICATIONS UPDATE (VERBAL UPDATE)**
- 12 **SAFER BROMLEY AWARDS DE-BRIEF** (Pages 37 - 38)
- 13 **INFORMATION ITEMS**
  - a **BROMLEY TRYANGLE PILOT PROJECT** (Pages 39 - 44)
  - b **SAFER BROMLEY PARTNERSHIP NEWSLETTER - SPRING 2012** (Pages 45 - 46)
  - c **BROMLEY COMMUNITY ENGAGEMENT FORUM MINUTES - 30TH NOVEMBER 2011** (Pages 47 - 56)
- 14 **ANY OTHER BUSINESS**
- 15 **MEETING DATES 2012/13**
  - 10.00am, Thursday 28<sup>th</sup> June 2012
  - 10.00am, Thursday 27<sup>th</sup> September 2012
  - 10.00am, Thursday 13<sup>th</sup> December 2012
  - 10.00am, Thursday 21<sup>st</sup> March 2013

.....

# Agenda Item 2

## SAFER BROMLEY PARTNERSHIP STRATEGIC GROUP

Minutes of the meeting held at 10.00 am on 15 December 2011

### Present:

Councillor Tim Stevens J.P. (Chairman)  
Councillor Julian Benington  
Nigel Davies, (LBB Director, Environmental Services)  
Clive Davison, (LBB Assistant Director, Public Protection)  
Charles Griggs, (Borough Police Commander)  
Paula Morrison, (Assistant Director, Public Health)  
Lulu Pearce, (Ethnic Communities Programme Manager)  
Ian Smith, (Bromley Community Engagement Forum)  
Sarah Walker, (Metropolitan Police Authority)  
Angela Williams-Brown, (Federation of Bromley Housing Associations)

### Also Present:

Councillor Douglas Auld  
Councillor John Canvin  
Susie Clark, (LBB Communications Officer)  
Clare Elcombe, (LBB Domestic Violence Coordinator)  
Graham Elder, (Bromley Fire Service)  
Pratheepan Jeyapragasam, (Community Safety)  
Jim McGowan, (Head of Environmental Protection)  
Dave Prebble, (Metropolitan Police)  
Laurie Taylor, (The Glades)  
Rob Vale, (LBB Head of Trading Standards)

<b>1</b>	<b>INTRODUCTIONS / APOLOGIES FOR ABSENCE</b>	<b>Action</b>
	Apologies were received from Councillor Reg Adams, Councillor Kate Lymer, James Cleverly (Metropolitan Police Authority), Sue Cooper (Affinity Sutton), Andrew Holcombe (Borough Commander, Fire Services), Colin MacLean (Community Links Bromley) and Simon Schutte (UK Border Agency).  The Partnership welcomed Ian Smith as the new Chairman of Bromley Community Engagement Forum	
<b>2</b>	<b>MINUTES OF LAST MEETING / MATTERS ARISING</b>	<b>Action</b>
	The notes of the last meeting held on 29 <sup>th</sup> September 2011 were received.  <b>It was AGREED that the minutes be approved.</b>	

3	<p><b>PERFORMANCE REVIEW 2011-12</b></p> <p>Consideration was given to the performance monitoring report for Qtr 2, 2011/12 which reported progress against 4 key indicators. Progress against Performance Indicator 1: Reduction in number of violent crimes showed that offences related to violent crimes represented 21% of Total Notifiable offences in Q2, and showed a reduction of 46 offences compared to the same period in 2010. Performance Indicator 2: Reduction in numbers of Property Crimes within Bromley showed that offences related to property crimes represented 65% of Total Notifiable offences in Q2. This showed an increase of 274 offences compared to the same period in 2010, however this period included the August disorder which accounted for a large proportion of the increase. Following a new method of reporting, progress against Performance Indicator 3: Reduction in levels of recorded Anti-Social Behaviour showed 775 fewer incidents of Anti-Social Behaviour reported compared to the same period in 2010, which represented an 11% reduction. Angela Williams-Brown highlighted that registered social landlords currently addressed Anti-Social Behaviour in partnership with Bromley Council and confirmed that an update would be provided to the next meeting of the Safer Bromley Partnership. The Borough Commander noted that Her Majesty's Inspectorate of Constabulary (HMIC) would shortly be inspecting a selection of London Boroughs around the approach taken to tackling Anti-Social Behaviour. If Bromley was chosen, it would provide a good opportunity for the Safer Bromley Partnership to highlight the excellent work that was undertaken across the Borough. Progress against Performance Indicator 4: Increased confidence in the fact that Bromley is a safe place showed an increase of 24% in respondents who agreed with the indicator 'To what extent do you agree that the police and local council are dealing with the ASB and crime issues that matter in this area' compared to same period in 2010/11. The Chairman was pleased to note the significant increase in public confidence that Bromley was a safe place to live</p> <p><b>It was AGREED that the Performance Management Report for Qtr 2, 2011/12 be noted.</b></p>	<p><b>Action</b></p> <p>AWB/SC</p>
4	<p><b>PORTFOLIO HOLDER VERBAL UPDATE</b></p> <p>The Chairman announced that it would be the Borough Commander's last meeting of the Safer Bromley Partnership and thanked him for his leadership and commitment to the Borough over the past 5 years. Members of the Partnership joined the Chairman in wishing the Borough Commander well in his new role in London Borough of Southwark, and the Chairman was pleased to present the Borough Commander with a Bromley plaque for his service to the Safer Bromley Partnership. The Borough Commander accepted the Bromley plaque with thanks</p>	<p><b>Action</b></p>

	<p>and reflected on the progress made during his time in Bromley. Bromley's new Borough Commander had not yet been recruited; however Jo Oakley had recently joined Bromley as Deputy Borough Commander and would be in charge of the Borough's operational policing.</p> <p>In other news, the Diversity Day held at Bromley Civic Centre on 18<sup>th</sup> October 2011 had been a great success, and the Chairman thanked all those who had been involved.</p> <p>With regard to the Community Safety Budget for 2012-13, the Chairman confirmed that the Community Safety Grant had been significantly reduced. Budget savings totalling £164,350 had now been agreed for 2012/13, and whilst this represented a significant cut in funding, community safety activities would be maintained with reduced budgets.</p> <p><b>It was AGREED that the update be noted.</b></p>	
<b>5</b>	<p><b>OPERATIONAL UPDATES</b></p> <p>(a) The Borough Commander provided an update on police activities across the Borough. The levels of robbery and personal robbery in Bromley were currently a concern, and a police operation would target burglary between November 2011 and January 2012. Crime prevention work was being delivered to raise awareness around the risks of residential burglary. A number of prolific burglars had recently been released from custody and integrated offender management would be key to ensure that offenders were managed in a coordinated way. Work was also being undertaken in schools to address the levels of personal robbery amongst young people. Further arrests had been made following the public disorder on 8<sup>th</sup> August 2011. 19 people had now been convicted and 17 were awaiting trial. The investigation continued.</p> <p>(b) Graham Elder, Station Manager of Beckenham Fire Station provided an update on Fire Service activities across the Borough. A joint working party with London Borough of Bexley was currently investigating how the delivery of fire services could be streamlined, with the Bromley model being used as a template.</p> <p>Over 1500 home fire safety visits had been undertaken so far in 2011/12. Visits were also undertaken with vulnerable adults living in the community through a process of partner referral, and 280 referrals had been received so far this year.</p> <p>Six Junior Citizen events were planned over next calendar year with primary schools across the Borough. The Junior Fire-setters Intervention Scheme was also ongoing and aimed to tackle problems with children setting fires.</p> <p>A new safety campaign had been launched on 12<sup>th</sup> December 2011 to encourage young people not to cook after a night out</p>	<b>Action</b>

	<p>drinking, with adverts appearing in central London Tube stations, free news papers and magazines and on social networking and listings sites.</p> <p>An initiative had been launched to reduce false fire calls and a charging policy had been put in place for repeated 'shut in lift' calls. Angela Williams-Brown confirmed that reviews of fire safety had also taken place in sheltered housing provision across the Borough.</p> <p>With regard to arson reduction, a recent bid for handheld devices had been successful and from January 2012, community issues would be photographed and provided to Bromley Council for action. The Chairman requested that an arson update report be brought to the March 2012 meeting</p> <p><b>It was AGREED that the update be noted.</b></p>	AH
6	<b>REVIEW OF PARTNERSHIP INITIATIVES</b>	<b>Action</b>
	<p>(a) Consultation re: Proposed Domestic Violence Disclosure Scheme (Clare's Law).</p> <p>The Domestic Abuse Strategy Coordinator outlined the Home Office consultation being undertaken on a possible domestic violence disclosure scheme. The Government sought views on three options:</p> <ul style="list-style-type: none"> <li>• To continue current arrangements under existing law</li> <li>• A 'right to ask' national disclosure scheme</li> <li>• A 'right to know' national disclosure scheme</li> </ul> <p>Members of the Partnership discussed the proposed options. The Borough Commander was supportive of the recommendations, however he also noted that uptake of the scheme was likely to be low.</p> <p>Councillor John Canvin was concerned about the level of information disclosed. The Domestic Abuse Strategy Coordinator explained that specific guidelines had been laid out to ensure that disclosure would only confirm if there may be concerns regarding a person. No details would be shared and the consultation was gathering views about what information would constitute 'concerns'. The Domestic Abuse Strategy Coordinator stated that her recommendation was that the Partnership response to the consultation request that unsubstantiated allegations not be included under the category of concerns.</p> <p>Paula Morrison confirmed that health services in the Borough were supportive of a national disclosure scheme, and issues had been raised by GPs around how concerns regarding domestic violence could be reported without breaching confidentiality of patients.</p> <p>Councillor Benington queried the rights of enquiry proposed for parents and siblings. The Domestic Abuse Strategy Coordinator confirmed that reporting processes were in place with Police and</p>	

	<p>partner agencies where there were domestic violence concerns by family members. It was agreed that the Partnership response would ask for both a 'right to ask' and a 'right to know' national disclosure scheme to be implemented.</p> <p>(b) Protecting the Elderly and Vulnerable Verbal Update</p> <p>The Head of Trading Standards gave an update on activities being undertaken to protect the elderly and vulnerable. Activities included Trading Standards working with local banks through a new protocol to protect older and more vulnerable residents from rogue traders. Work was also being undertaken with health staff who supported vulnerable people in the community. A programme of four theatre workshops would be provided to vulnerable elderly residents in the Borough in March 2012, including a workshop in the Biggin Hill Area. A workshop would also be provided for adults with learning difficulties who were living independently. Dave Prebble highlighted the role of Safer Neighbourhood Teams in promoting these events.</p> <p>(c) Enforcement Activity Report</p> <p>The Assistant Director: Public Protection gave an update on enforcement activity undertaken by Bromley Council under delegated powers during the period 1<sup>st</sup> April 2011 to 30<sup>th</sup> September 2011. In considering the update, the Borough Commander suggested that the range of enforcement activities be publicised in the Safer Bromley News. Paula Morrison also requested that a summary of enforcement activities undertaken in relation to rogue traders be provided to health staff who worked with vulnerable people in the community. It was agreed that an update on enforcement activity be provided to the Partnership on a six monthly basis.</p> <p><b>It was AGREED the update be noted.</b></p>	<p>CE</p> <p>SC</p> <p>CD</p>
7	<p><b>SAFER BROMLEY NEWS - WINTER ISSUE UPDATE</b></p> <p>Susie Clark provided an update on the Safer Bromley News, the electronic newsletter showcasing the work of the Safer Bromley Partnership. The winter 2011 edition had recently been published and included festive season safety tips. Work was being undertaken to increase the contribution of partners to the Safer Bromley News, and a meeting of the communications officers from a range of partner organisations and services would be held on 24<sup>th</sup> January 2011 to support a coordinated response to community safety communications. The Chairman requested that Borough mentoring programme be</p>	<p><b>Action</b></p> <p>SC</p>

	publicised in the next issue of the Safer Bromley News.  <b>It was AGREED that the update be noted.</b>	
<b>8</b>	<b>REPORTS FROM SUB-GROUPS</b>	<b>Action</b>
	<p><u>DAT Report</u> – Dave Prebble reported that there would be a launch of the new Drug User Services in the New Year and an invitation would be extended to Councillors who were members of the Partnership to attend.</p> <p><u>Youth Offending Team Report</u> – The Chairman reported that the recent inspection of the Youth Offending Team had gone well and thanked the LBB Crime Analyst for his work in assisting the Youth Offending Team during the inspection process.</p> <p><u>Arson Sub Group Report</u> – Graham Elder reported that work was being undertaken with Arson Reduction Officers to develop a ward-based response to tackling arson. A multi-agency ‘clean up’ day would be held on 17<sup>th</sup> January 2012.</p> <p><u>Bromley Community Engagement Forum Report</u> – Ian Smith confirmed that the Bromley Community Engagement Forum’s annual Youth Conference would be held on 23<sup>rd</sup> March 2012 at the Bromley Education Development Centre. Work was also being undertaken with Veneratio to set up an intergenerational project in the Borough.</p>	
<b>9</b>	<b>ANY OTHER BUSINESS</b>	<b>Action</b>
	<p>(a) Councillor John Canvin highlighted concerns around metal theft in the Borough and asked what action was being taken to address this. The Borough Commander confirmed that there had been a significant increase in metal theft across the UK, and that a Metropolitan Police-wide operation had been launched in response to a series of metal thefts across London. Safer Neighbourhood Teams across the Borough were working with Trading Standards to ensure scrap metal dealers in Bromley were complying with legislation and not accepting any metal suspected of being stolen. The Police were also working with British Transport Police to tackle railway cable theft.</p> <p>(b) Sarah Walker confirmed that the Mayor’s Office for Policing and Crime would be established in January 2012, taking over the functions of the Metropolitan Police Authority. A series of public events to promote the new way of working would be held from February 2012, including an event in Croydon on 4<sup>th</sup> February 2012. An event would also be held at City Hall for community safety partners and invitations would be issued shortly.</p>	All Partners



10	DATE AND TIME OF NEXT MEETING	Action
	All meetings start at 10.00am unless otherwise notified.  Thursday 22 <sup>nd</sup> March 2012	

The Meeting ended at 11.40 am

Chairman

This page is left intentionally blank

<b>Meeting:</b>	<b>Safer Bromley Partnership Strategic Group</b>
<b>Date:</b>	<b>8 March 2012</b>
<b>Subject:</b>	<b>Performance Review 2011/2012</b>
<b>Author:</b>	<b>Pratheepan Jeyapragasam, Crime Analyst</b> pratheepan.jeyapragasam@bromley.gov.uk

## 1 SUMMARY

- 1.1 This report provides an update in relation to the targets for the Safer Bromley Partnership agreed in July 2011. The report provides the latest performance monitoring data to 31 December 2011 (Quarter 3)

## 2 RECOMMENDATION

- 2.1 The Strategic Group is asked to
- Note the performance information contained within the report.

## 3 BACKGROUND INFORMATION

- 3.1 At previous meetings of the Partnership, the following Control Strategy Priorities were agreed as a means of measuring the success of the Partnership in making Bromley a safer place::

- Crimes Against Property
- Violence Against Person
- Anti-Social Behaviour
- Public Confidence

- 3.2 These priorities are reflected in the performance framework established by the Metropolitan Police and, as such, it is proposed that these four indicators form the basis of the future performance management regime for the Safer Bromley Partnership. In relation to the first two priorities, it proposed that targets be set against the indicators of reducing Violent Crime and reducing Property Crime. A summary of the “portfolio” of offences and Anti Social Behaviour that are included within these overarching targets is provided at Appendix 1. As agreed, only the following four targets are reported on at each meeting of the Strategic Group:

*Performance Indicator 1*    Reduction in Number of Violent Crimes within Bromley

*Performance Indicator 2*    Reduction in Number of Property Crimes within Bromley

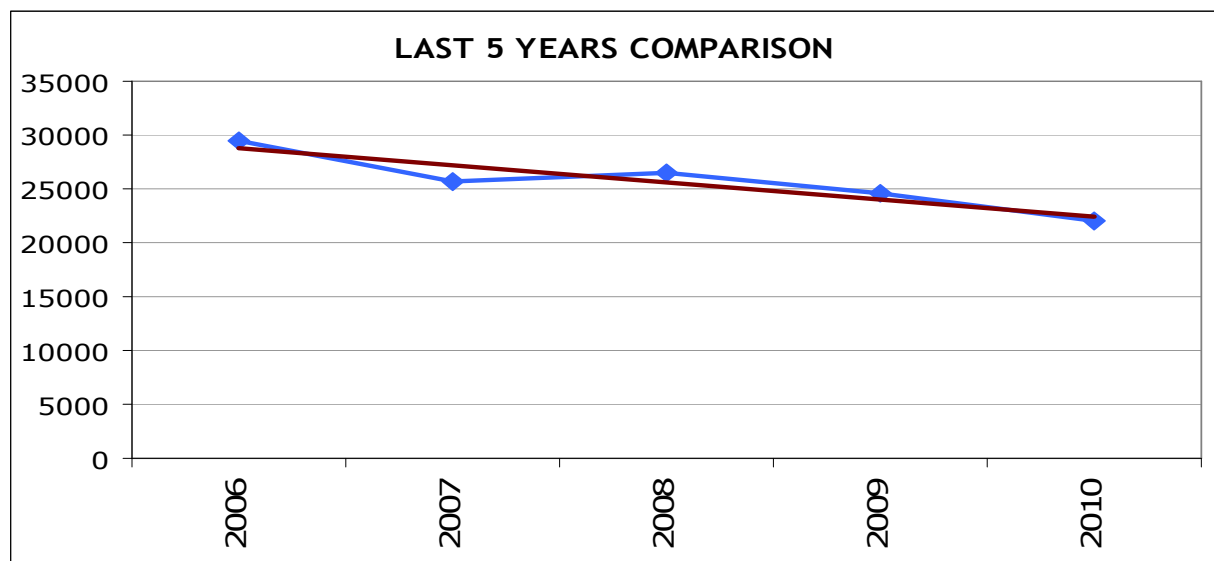
*Performance Indicator 3* Reduction in Levels of Recorded Anti Social Behaviour

*Performance Indicator 4* Increased Confidence in the Fact that Bromley is a Safe Place

Reporting on individual crime types and detail of individual operations will only be made as a routine if achievement against set targets is not being made or, in some cases, where the measurable rates of individual offences or types of offending are significantly different from expected trends and predicted patterns etc. The management of these operational level issues will be dealt with outside of the Strategic Group at the combined Police/Partnership Tactical Tasking and Coordination Group chaired by the borough Superintendent.

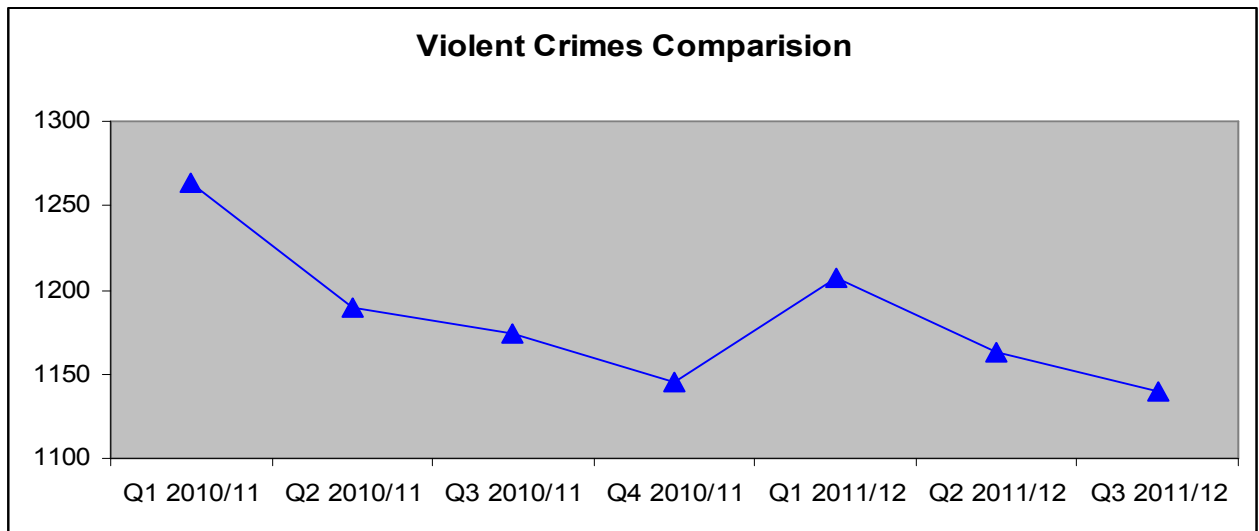
## Performance Review 2011/2012

- 3.3 Significant progress has been made in relation to reducing crime and disorder in Bromley. This is reflected not only in the previous year's performance figures but also over the previous five quarters and the following charts provide an indication of the trends in crime in Bromley over the past five years.



## Performance Indicator 1- Reduction in numbers of Violent crimes within Bromley

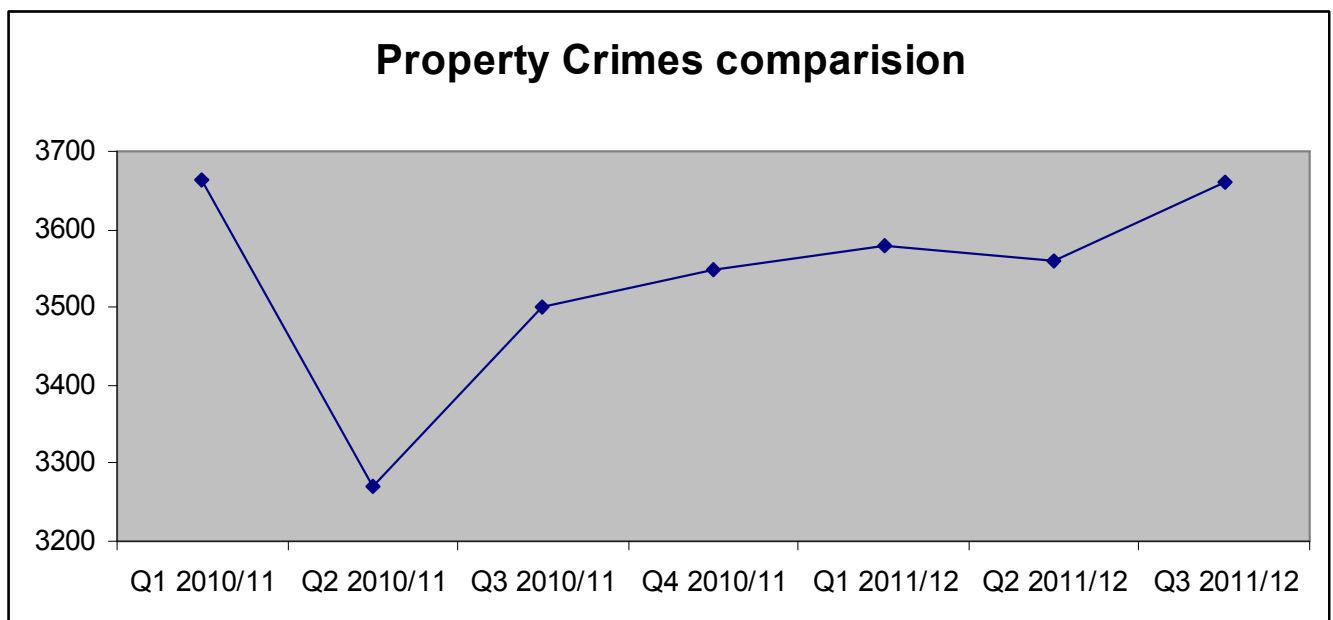
- 3.4 Offences related to Violent Crimes represent 21% of the Total Notifiable Offences in the period of Quarter 3 this year



3.5 During the October 2011 to December 2011 there were 1140 Total Violent Offences reported to the Police, this represented a reduction of 34 (↓ 3%) offences compared with the same period previous year.

### Performance Indicator 2- Reduction in numbers of Property Crimes within Bromley

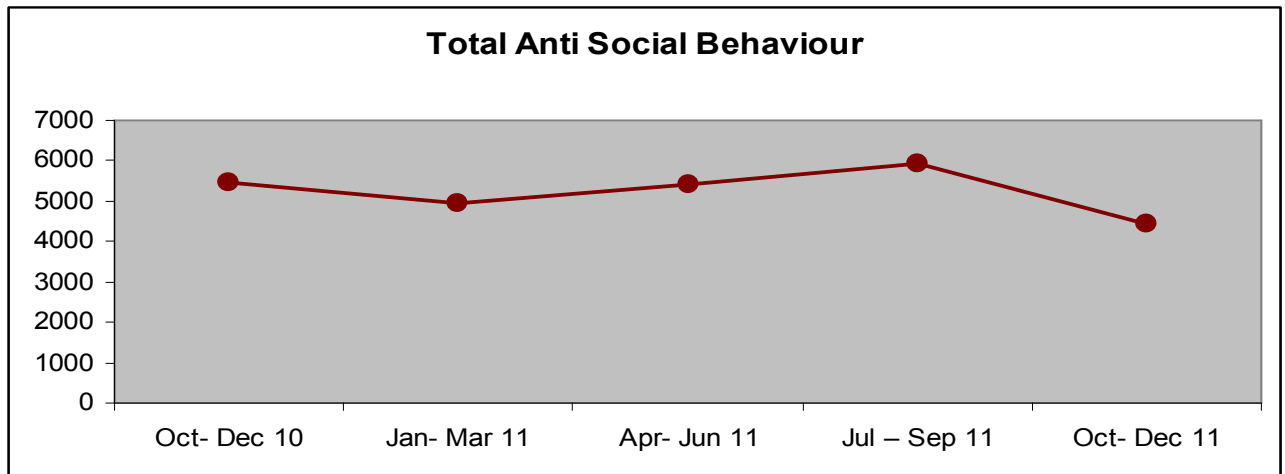
3.6 Total offences to property Crimes represent 66% of the Total Notifiable Offences in the period of Quarter 3 this year



3.7 During the October to December 2011 there were 3660 Total Property related Offences reported to the Police. This represented an increase of 160 (↑14%) offences compared

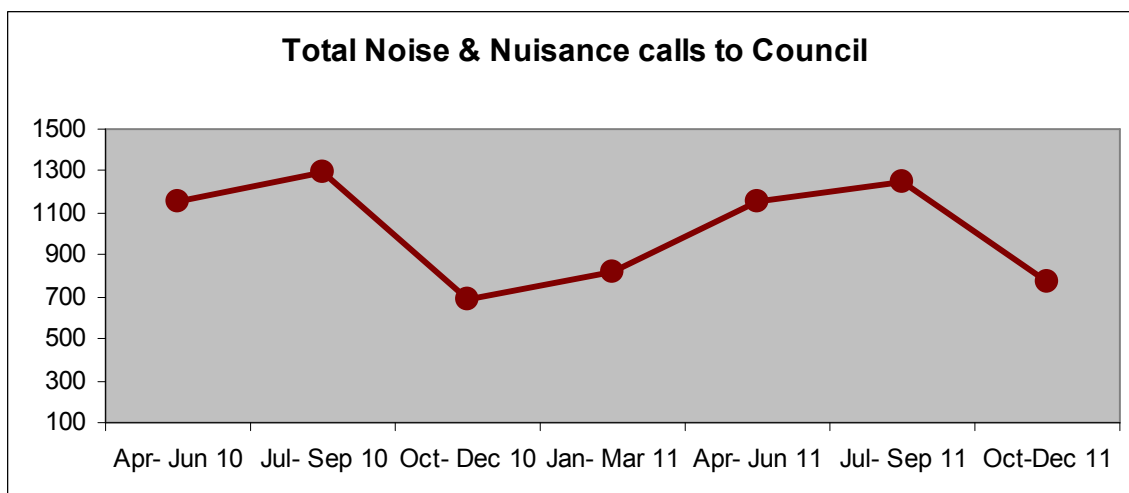
with the same period previous year. This includes an increase of 65 Burglaries, 33 Robberies and 70 Thefts which accounts for a large proportion of this increased.

## Anti-Social Behaviour

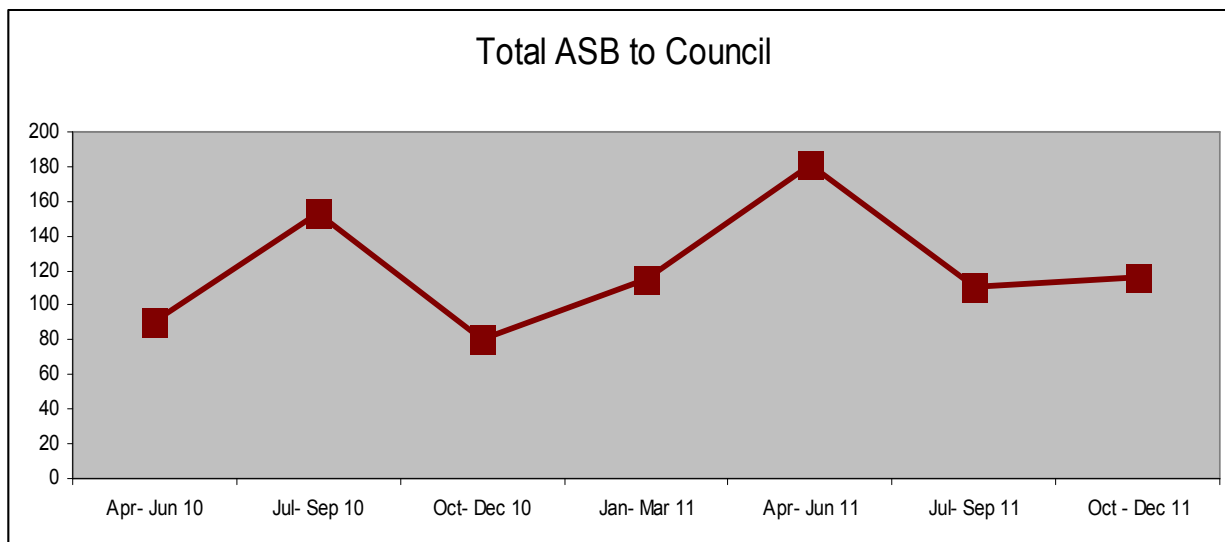


	Oct- Dec 10	Jan- Mar 11	Apr- Jun 11	Jul – Sep 11	Oct- Dec 10
Noise & Nuisance	688	818	1157	1250	772
ASB to Council	80	115	181	111	116
Fly Tipping Investigation	91	154	154	159	105
ASB to Police	3185	2584	2965	3223	2497
Graffiti	1398	1269	945	1190	961
<b>Total ABS</b>	<b>5442</b>	<b>4940</b>	<b>5402</b>	<b>5933</b>	<b>4451</b>

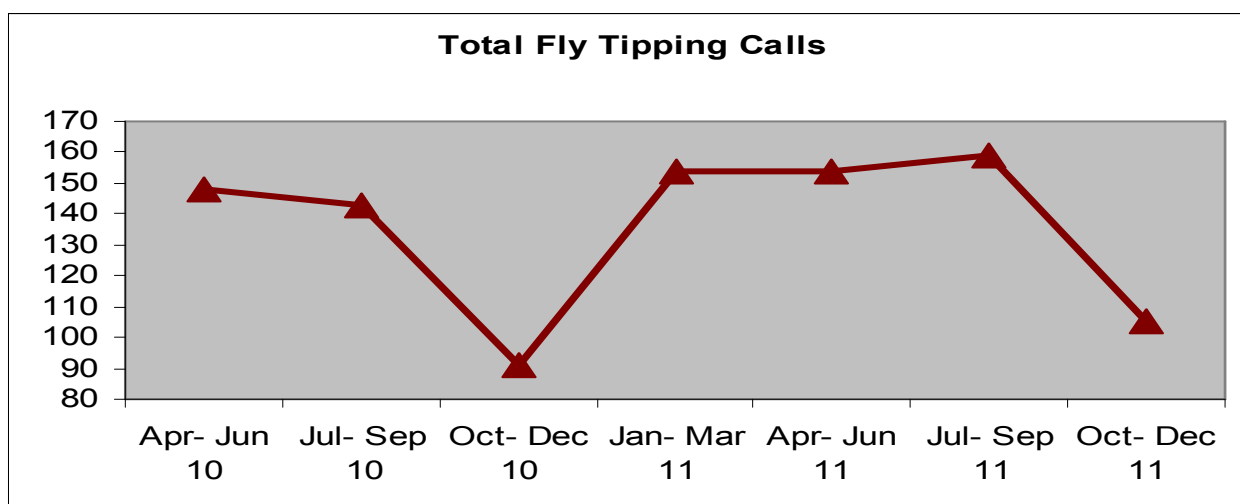
3.8 During the reporting period, the borough has experienced a reduction of 991 (22%) incidents of ASB reported when compared with the same period last year.



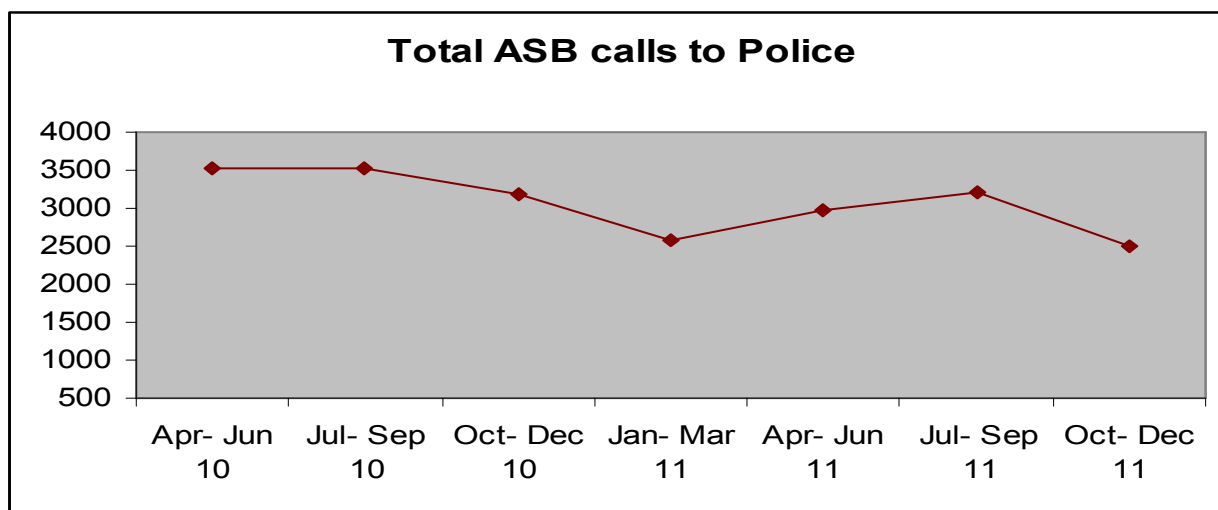
3.9 As can be seen from the figure above, during the reporting period, the borough has experienced an increase of 84 incidents of Noise and Nuisance ASB reported when compared with the same period last year.



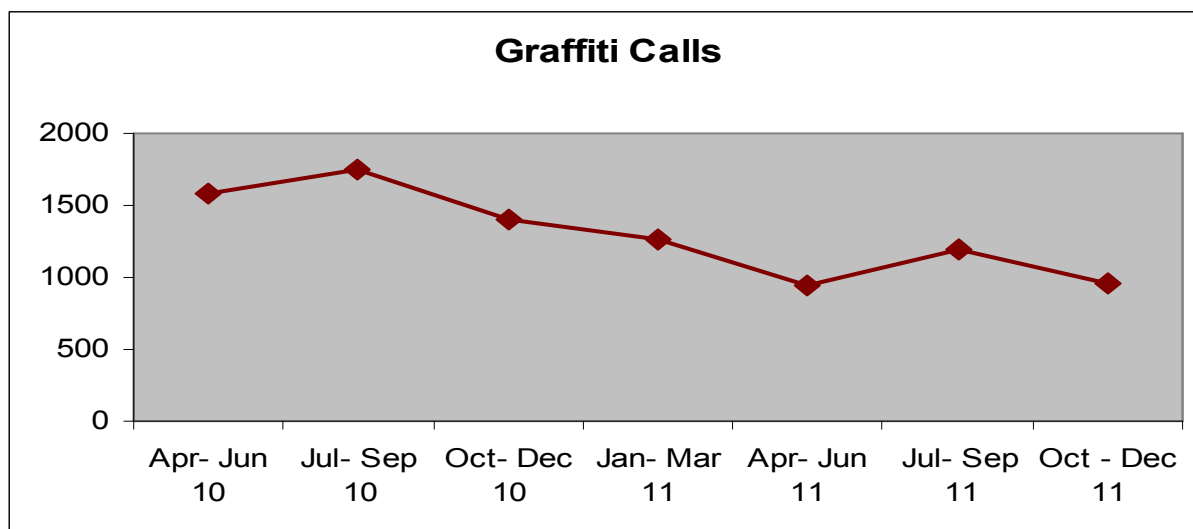
3.10 During the period July to September 2011 the borough experienced an increase of 36 incidents of ASB reported when compared with the same period last year. However, it should be noted that the Safer Bromley Partnership introduced the Matrix reporting system for ASB and this targets higher levels of anti-social behaviour and also targets the most vulnerable. This is leading to an increase in referrals from Housing Associations, Police and Local Authority. In addition the Earn Your Travel Back scheme can also contribute to an increase. As the Matrix system is adopted by more agencies then there will be an increase in referrals.



3.11 As can be seen from the figure above, during the reporting period, the borough has experienced an increase of 14 incidents of Fly Tipping ASB reported when compared with the same period last year. However, the significant trend is still focused on long term reduction of incidents.



3.12 During this reporting period there was a reduction of 688 incidents reported to police regarding ASB compared with the same period last year.



3.13 As can be seen from the figure above, during the reporting period, the borough has experienced a reduction of 437 incidents of Graffiti reported when compared with the same period last year. This could be for a number of reasons, increase community engagement, street friends taking a stronger role in the community etc.



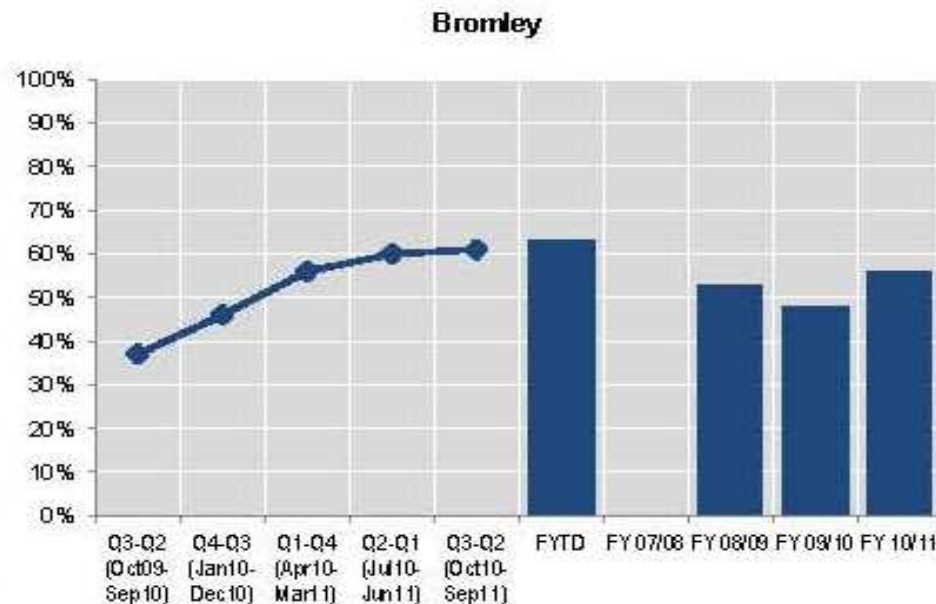
## Increased confidence in the fact that Bromley is a safe place

Q74AB: To what extent do you agree that the police and local council are dealing with the ASB and crime issues that matter in this area? Base: all respondents

Difference from previous quarter [Borough]: +1%

Difference from same quarter in 2011/12 [Borough]: +24%

% agree (strongly/tend to)	Bromley			MPS
	%	Base	Confidence interval	%
Q3-Q2 (Oct09-Sep10)	37%	640	±3.74%	49%
Q4-Q3 (Jan10-Dec10)	46%	640	±3.86%	50%
Q1-Q4 (Apr10-Mar11)	56%	640	±3.85%	51%
Q2-Q1 (Jul10-Jun11)	60%	581	±3.98%	51%
Q3-Q2 (Oct10-Sep11)	61%	521	±4.19%	52%
Financial Year to Date	63%	201	±6.67%	52%
FY 07/08	NA	0	NA	NA
FY 08/09	53%	640	±3.87%	52%
FY 09/10	48%	640	±3.87%	46%
FY 10/11	56%	640	±3.85%	51%



## Promoting public safety: Proxy SPI10b Perceptions of ASB

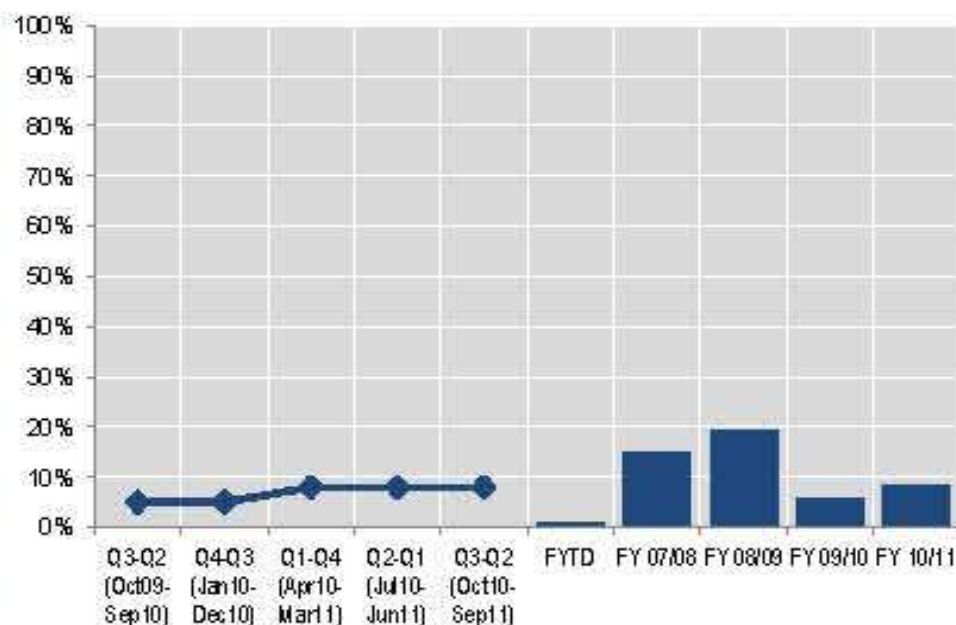
Q10A-G [composite]: Perceptions of ASB Base: all respondents, excluding those indicating 'don't know' to any of the seven composite factors

Difference from previous quarter [Borough]: ±0%

Difference from same quarter in 2011/12 [Borough] +3%

% high level of worry	Bromley			MPS
	%	Base	Confidence interval	%
Q3-Q2 (Oct09-Sep10)	5%	473	±1.96%	12%
Q4-Q3 (Jan10-Dec10)	5%	497	±1.92%	12%
Q1-Q4 (Apr10-Mar11)	8%	551	±2.27%	12%
Q2-Q1 (Jul10-Jun11)	8%	525	±2.32%	11%
Q3-Q2 (Oct10-Sep11)	8%	479	±2.43%	11%
Financial Year to Date	1%	186	±1.43%	10%
FY 07/08	15%	489	±3.15%	18%
FY 08/09	19%	505	±3.44%	23%
FY 09/10	5%	488	±2.02%	13%
FY 10/11	8%	551	±2.29%	12%

Bromley



## Q15: To what extent are you worried about ASB in the area?

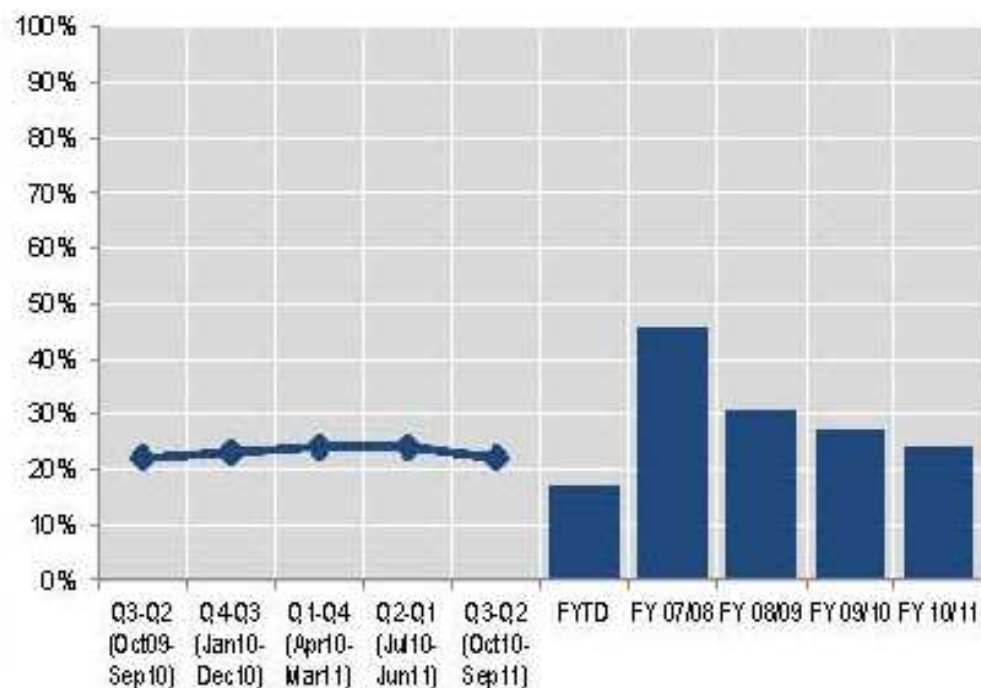
Base: all respondents, excluding 'don't know'

Difference from previous quarter [Borough]: -2%

Difference from same quarter in 2011/12 [Borough] ±0%

% worried (very/fairly)	Bromley			MPS
	%	Base	Confidence interval	%
Q3-Q2 (Oct09-Sep10)	22%	638	±3.21%	25%
Q4-Q3 (Jan10-Dec10)	23%	638	±3.27%	25%
Q1-Q4 (Apr10-Mar11)	24%	638	±3.31%	25%
Q2-Q1 (Jul10-Jun11)	24%	581	±3.47%	26%
Q3-Q2 (Oct10-Sep11)	22%	520	±3.56%	25%
Financial Year to Date	17%	200	±5.21%	27%
FY 07/08	45%	639	±3.86%	40%
FY 08/09	31%	634	±3.59%	39%
FY 09/10	27%	640	±3.43%	25%
FY 10/11	24%	638	±3.32%	25%

Bromley



## APPENDIX 1

### Performance Indicator Portfolios:

<b>Violence Portfolio</b>	
<b>Offences</b>	<b>Supporting Measures</b>
Violence with Injury	Domestic Violence
Common Assault	Domestic Violence Sanction Detection Rate
Harassment	Domestic Violence Arrest Rate
Threats/ Conspiracy to Kill	Serious Youth Violence
Blackmail	Knife Enabled Crime
Kidnapping/ False Imprisonment	Knife Enabled Crime Sanctioned Det. Rate
	Gun Crime
	Gun Crime Sanctioned Det. Rate
	Most Serious Violence
	Most Serious Violence Sanctioned Det. Rate

<b>Property Portfolio</b>
<b>Offences:</b>
Personal Robbery
Commercial Robbery
Total Robbery
Residential Burglary
Non-Residential Burglary
Theft/Taking Motor Vehicles
Theft From Motor Vehicles
Theft From Shops
Theft From Person
Theft of Pedal Cycles
Other Theft
Criminal Damage

<b>Anti Social Behaviour Portfolio</b>
<b>ASB:</b>
Noise & Nuisance
ASB to Council
Fly Tipping
ASB to Police
Graffiti

<b>Meeting:</b>	<b>Safer Bromley Partnership Strategic Group</b>
<b>Date:</b>	<b>8 March 2012</b>
<b>Subject:</b>	<b>Tackling Gangs In Bromley</b>
<b>Author:</b>	Colin Newman, Head of Community Safety colin.newman@bromley.gov.uk

## 1 SUMMARY

- 1.1 This paper provides an introduction to the work that is being undertaken within Bromley to tackle the harm caused by gang membership and the activity of gangs within the borough. In addition to the verbal update that will be provided by the Metropolitan Police in relation to Police activity, this document includes an outline of the Tackling Gangs Initiative provided by Officers from the London Borough of Bromley. The positive activity that is being undertaken is acknowledged and the paper seeks a formal tasking for the Partnership's Senior Crime Analyst to develop an up to date analysis of gang issues and recommendations for Partnership action to reduce any negative impact within the borough.

## 2 RECOMMENDATION

- 2.1 The Strategic Group is asked to
- Note the information contained within the report and the positive activity highlighted.
  - Endorse the work being undertaken to tackle problematic behaviour of young people.
  - Request a full analytical report on Gang Issues in Bromley to be presented at the next meeting of the Safer Bromley Partnership.

## 3 BACKGROUND INFORMATION

- 3.1 The challenge presented by gangs and associated activities is a complex and serious issue faced by the Safer Bromley Partnership. There can be no doubt that the challenges faced are not those experienced by "inner-city" areas and other London Boroughs. However, Bromley does experience a number of the key challenges that are presented by gang related activity and this is experienced across a range of communities and agencies.
- 3.2 The purpose of this agenda item is to provide an overview of some of the activities that are currently underway but also to commission a further report at the next meeting of the Safer Bromley Partnership that provides an analysis of the problems presented by gangs and associated behaviour and an outline of proposals for further action to reduce the impact of gang related behaviour within the borough. It is proposed that the Partnership will receive a verbal update from the Metropolitan Police in relation to recent activity to disrupt gang activity.

In addition, this paper includes an outline of new proposals to work with Central Government initiatives to reduce the impact of gangs within the borough. The attached paper (Appendix A) entitled “Tackling Troubled Families Programme” sets out an overview of the proposed activity and the funding that is being made available. The announcements from Government and the Department for Communities and Local Government suggest a step change in the way Government and Councils address issues for troubled families. Councils have been asked to identify actual families based on factors such as truancy, anti-social behaviour and costs of intervention to public services.

- 3.3 Members of the Partnership are invited to consider the impact of these two areas and to request further information be presented at the next Partnership meeting. In particular, it is proposed that the Senior Crime Analyst be tasked with the development of a formal profile of gangs within the borough and to identify the risks to crime and disorder presented by the issues identified. The report will also provide formal proposals for activity in the coming year and beyond. In particular, officers will identify the challenges faced and present a cross partnership multi-agency response to the issues highlighted. One example of good work that has been identified in London is the gang prevention programme in the London Borough of Waltham Forest. It is a clear expectation that the work undertaken and proposed for the coming year should identify a common intervention and be led by the Safer Bromley Partnership as the statutory partnership tasked with reducing crime and disorder in the borough.



This page is left intentionally blank



## BOROUGH OFFICERS' GROUP

Bromley Civic Centre, Room P11  
Wednesday 1 February 2012, 8.30 am – 9.30 am

**Agenda Item 3: Tackling Troubled Families Programme**

**Contact Chief Officer: Gillian Pearson, Director Children & Young People Services**

### 1. CONTEXT

- 1.1 Work with troubled families has become an increasingly important issue for councils and government. Following an internal government review, the Prime Minister set up a new Troubled Families Unit in November 2011, based in the Department for Communities and Local Government (DCLG). It has been tasked with implementing a strategy to turn around the lives of the most troubled families by 2015. The unit is required to work with local councils to *“maintain and wherever possible build upon the momentum already gained”*.<sup>1</sup>
- 1.2 The Government defines a ‘troubled family’ as one that  
*“has serious problems - including parents not working, mental health problems, and children not in school - and causes serious problems, such as crime and anti-social behaviour. All of which costs local services a lot of time and money routinely responding to these problems”*.
- 1.3 The DCLG has used specific benchmark criteria which illustrate a ‘Troubled Family’, and in estimating numbers, a family would need to be experiencing at least **five** of the following **seven** characteristics:
- § no one in the family is in work;
  - § living in poor or overcrowded housing;
  - § no parent has any qualifications;
  - § mother has mental health problems;
  - § at least one parent has a longstanding illness, disability or infirmity;
  - § a low income; and
  - § an inability to afford a number of food, clothing items.
- 1.4 The Government used previous Family and Children Survey data to identify the numbers of troubled families per local authority. That survey estimated that in England there are 120,000 families facing multiple problems. These estimates have been calculated using population data and indices of deprivation and child well-being. Using this methodology, London has a total of 21,660 (18.5%) of the 117,015 families identified. The full breakdown by borough can be found at **Appendix 1**.<sup>2</sup>

<sup>1</sup> Letter to Council’s Chief Executives (17.11.11)

<sup>2</sup> Extract from report to Association of London Directors of Children’s Services (23.01.12)

- 1.5 The DCLG are indicating that Bromley has **490 families** who fulfil the criteria applied through their analysis of data.
- 1.6 Turning troubled families around is defined as:
- § Getting children back into the classroom and not wandering the streets
  - § Getting parents on to a work programme to stop them from committing crime
  - § Reducing the high costs to the tax-payer.
- 1.7 The Government's estimates indicate that £9 billion is being spent annually on the 120,000 most troubled families (based on Government data collected in October and November 2011). A large proportion of this money is being spent on taking children into care (fostering, residential care, adoption and the cost of social workers) and also the significant criminal justice costs of children and adults committing crime. The £9 billion also includes eviction costs and benefit payments, the cost of drug and alcohol dependency, specialist schooling (eg excluded pupils in Pupil Referral Units) and health costs.

## 2. HOW WILL THE PROGRAMME WORK?

- 2.1 The announcements from Government and DCLG suggest a step change in the way Government and Councils address issues for troubled families. Councils have been asked to identify actual families based on factors such as truanting, anti-social behaviour and costs of intervention to public services.
- 2.2 The programme will run primarily on a payment-by-result basis to incentivise local authorities and key partner agencies to take action to turn around the lives of troubled families in their area by 2015. The Government will offer to pay up to 40% of local authorities' costs of dealing with these families (Payment-by-Results model), payable only when they and their partner agencies achieve evidenced success with families.
- 2.3 The Government will also fund a national network of troubled family 'Trouble-shooters' in each local council to co-ordinate and oversee the programme of action in their area.

## 3. GRANT FUNDING

- 3.1 In December 2011, it was announced **that £448 million** will be made available over the next 3 years, 2012/13 – 2014/15, together with contributions from 6 Whitehall Departments including: the Department for Communities and Local Government, the Department for Education; the Department of Health; the Department for Work & Pensions, the Home Office; the Ministry of Justice. Each made a contribution to the programme by reprioritising their departmental spend.
- 3.2 This £448m grant is to be spent in 3 main ways:
- (i) funding for Councils of a £100k per year to employ new 'co-ordinators' or 'trouble shooters' who will be responsible for co-ordinating the programme at local level for 3 years;
  - (ii) funding for Councils, at the rate of £20k for the transition period until the 2012/13 financial year, to undertake preparatory work, identifying the troubled families in their areas and making action plans;

- (iii) funding 40% of the estimated cost of the intervention action plan with the troubled families in each area; the majority of this money to be paid as 'results' payments in return for outcomes delivered. Local Authorities are expected to match fund 60%.
- 3.3 Councils interested in participating have to, by the end of March 2012: recruit a Co-ordinator/Trouble Shooter, identify 60% of match funding, draw up an action plan and identify all the troubled families in their area they intend to work with.
- 3.4 Details of how the bulk of the central funding will be distributed are apparently yet to be worked up and announced.

#### **4. CONCLUSION**

- 4.1 The proposed programme will not only require close co-ordination across a range of Local Authority services, but also and more importantly, across all the relevant other agencies in Bromley to be successful.
- 4.2 This could present a fantastic opportunity to develop a resourced and targeted programme that will deliver real change to children and families in Bromley. The desire for all partner agencies to work together to develop focused, outcome driven interventions to known troubled families in Bromley has already been discussed at our key partnership meetings including the Local Strategic Partnership Board and Children & Young People Partnership Board. This programme potentially gives us the tools and resource to build on and enhance the excellent partnership arrangements that Bromley is known for.
- 4.3 However, the question of match-funding will need to be resolved, given the challenging financial context for the Council and key statutory agencies during the 4-year planning cycle 2012/13 – 2015/16.

**London Borough breakdown of the number of identified 'troubled families'**

Source CLG Website

<b>Local Authority Name</b>	<b>Estimated No. of families with multiple problems</b>
Barking and Dagenham	645
Barnet	705
Bexley	400
Brent	810
Bromley	490
Camden	755
City of London	25
Croydon	785
Ealing	880
Enfield	775
Greenwich	790
Hackney	1,000
Hammersmith and Fulham	540
Haringey	850
Harrow	395
Havering	415
Hillingdon	555
Hounslow	585
Islington	815
Kensington and Chelsea	400
Kingston upon Thames	225
Lambeth	1,080
Lewisham	910
Merton	370
Newham	985
Redbridge	550
Richmond upon Thames	190
Southwark	1,085
Sutton	320
Tower Hamlets	1,120
Waltham Forest	760
Wandsworth	660
Westminster	790

<b>Meeting:</b>	<b>Safer Bromley Partnership Strategic Group</b>
<b>Date:</b>	8 March 2012
<b>Subject:</b>	Safer Bromley "Clean Up"
<b>Author:</b>	Colin Newman, Head of Community Safety colin.newman@bromley.gov.uk

## **1 SUMMARY**

- 1.1 On 17 January 2012, the Safer Bromley Partnership led a multi-agency "clean up" operation in the area of the Mountfield Estate in Bromley. This report provides a brief summary of activity undertaken and results achieved.

## **2 RECOMMENDATION**

- 2.1 The Strategic Group is asked to:
- Note the work undertaken in Cray Valley East and thank partners for their work and commitment to the clean up undertaken.

## **3 BACKGROUND INFORMATION**

- 3.1 The Operation took place on the 17<sup>th</sup> January 2012 and staff were available from a range of Partnership agencies including the London Borough of Bromley, Affinity Sutton, Metropolitan Police, the Probation Service and Kier Services and the local community. In addition to the work undertaken on the day, a number of the agencies involved provided detailed environmental audits prior to the event.
- 3.2 In relation to staffing, the following provides an outline of staff that were made available from Partnership agencies during the day:

Community Safety/Public Health team supplied 3 Officers and a Control vehicle for activity.

LBB Street Scene services provided a Street Scene supervisor and an Enviro Crime officer and abandoned vehicle Officer plus staff from contractor services.

The Parks and Green spaces service and provided a range of officers to undertake work. The Probation Service supervised 15 Payback offenders in clearance works.

Affinity Sutton provided One Housing Manager, 6 Housing Officers, and an Abandoned Vehicle Officer. Affinity Sutton also supplied 2 Bulk Carrier Vehicles and Staff for rubbish removal and 2 graffiti removal units.

The Police supplied an Inspector a Sergeant and 6 PCSOs to assist with the work across the identified area.

- 3.3 In relation to work undertaken and volume of waste removed, the following provides a summary of the major deliverables:

Graffiti - 92 square metres cleared

Rubbish Removed – 6,260 kg removed from location

Excise Enquiries – 11 Vehicles Identified and Investigated.

- 3.4 Housing Officers and PCSOs engaged with the residents in relation to activity being undertaken and identifying any concerns.
- 3.5 Building on the success of this operation, a second event is planned for delivery in March 2012 at a different location. The planning work is ongoing and target areas identified.

<b>Meeting:</b>	<b>Safer Bromley Partnership Strategic Group</b>
<b>Date:</b>	<b>8 March 2012</b>
<b>Subject:</b>	<b>Safer Bromley Partnership Funding 2012/2013</b>
<b>Author:</b>	Colin Newman, Head of Community Safety colin.newman@bromley.gov.uk

## 1 SUMMARY

1.1 This report provides an update in relation to the funding application to the Greater London Authority for the Community Safety Fund in 2012/1013. The letter (Appendix A) sets out the expected position at the end of 2011/2012 and the proposals for expenditure in 2012/2013. The proposals for expenditure incorporate a range of services including the Anti Social Behaviour Team, Domestic Abuse Strategy Coordinator and contributions to the work of the Drug Action Team in Bromley.

## 2 RECOMMENDATION

2.1 The Strategic Group is asked to

- Note the letter from Council Officers setting out the claim for funding from the Greater London Authority.
- Receive any further funding updates for the Safer Bromley Partnership.

## 3 BACKGROUND INFORMATION

3.3 The attached letter (Appendix A) is addressed to the Community Safety Unit at the Greater London Authority. It provides an update on the expected position at the year end for 2011/2012 and sets out the anticipated allocation of the available grant for 2012/2013.

1. Part Funding for the Bromley's Anti Social Behaviour Team (£32,900)
2. Part funding for Safer Neighbourhood Officers (£29,500)
3. Domestic Abuse Strategy Co-ordinator (£43,000)
4. Young Victim's Project (£8,200)
5. Teenage and Parent Support Service (£9,455)
6. Bromley Young People's Substance Misuse Service (£17,295)

3.4 It is noted that the funding application is for a total of £140,350 for 2012/2013.

This page is left intentionally blank



GLA Community Safety Unit  
For the attention of Mr Mat Ilic  
City Hall  
The Queen's Walk  
London SE1 2AA

10th January 2012

## **COMMUNITY SAFETY FUND 2012/13 – LONDON BOROUGH OF BROMLEY**

Dear Mr Ilic,

I refer to your email dated 16<sup>th</sup> December 2011 asking for a response to the following questions:

**1) Will you be expecting to carry forward any 2011/12 monies into 2012/13, and if so, how much?**

We do not expect to carry forward any 2011/12 monies into 2012/13

**2) What will be your spending priorities for 2012/13?**

I have provided below an outline of how we would allocate the available funding under the Community Safety Fund, basing these allocations on the continuation of proven projects that have a positive impact on Community Safety priorities in Bromley. As such, we have prioritised activity to tackle Anti-Social Behaviour, to maximise the effectiveness of Safer Neighbourhoods and public engagement in community safety and work to support young victims of crime.

The Safer Bromley Partnership has a range of projects that we are keen to commence in the borough but recognise that the restrictions caused by available budgets place restrictions on all boroughs. As such, the outline below represents our priority allocations for available budgets and, at this stage we have estimated this to be £140,350 (including what was previously available as Young Person's Substance Misuse Grant). It has been assumed, as indicated in your e-mail message, that budgets will be reduced by 50% on what was made available in 2011/2012. It is our intention to use all the available funds for community safety and crime reduction purposes only.

### **Statement of Spending Plans for 2012/2013**

#### **1. Part Funding for the Bromley's Anti Social Behaviour Team.**

Tackling Anti-Social Behaviour has been adopted by the Safer Bromley Partnership as one of its key Control Strategy priorities for 2011/2012 within the Partnership's Strategic Assessment. The team aims to prevent, deter and reduce Anti-Social Behaviour through a programme of work that delivers a set of minimum standards for dealing with behaviour such as:

- Nuisance neighbours
- Yobbish behaviour and intimidating groups taking over public spaces
- Vandalism, graffiti and fly-posting
- People dealing and buying drugs on the street
- People dumping rubbish and abandoned cars

- Begging and anti-social drinking
- The misuse of fireworks
- Reckless driving of mini-motorbikes.

The team is made up of both Council officers and seconded Police officers managed by the borough's Head of Community Safety. We are confident that this partnership approach has put us in an excellent position to respond to the recent Home Office review of powers to tackle Anti-Social Behaviour.

£32,900 (Contribution to costs – additional funding will be provided within the budget of the Portfolio Holder for Public Protection and Safety).

## **2 Part funding for Safer Neighbourhood Officers**

These officers provide a unique link between the Council and Safer Neighbourhood Teams Safer Neighbourhood Panels, and other interested stakeholders to promote the objectives of the Safer Bromley Partnership and integrate the work of the Partnership into community initiatives. In addition to providing support to communities and police teams in applying for funding from the Safer Bromley Partnership and external trusts and grants these officers act as the single point of contact at panel meetings and action the various issues which arise. Taking the lead on many problem solving initiatives the officers are responsible for the development of projects in line with local and national trends e.g. developing the Arson Sub Group alongside other Safer Bromley Partners, increasing community capacity to tackle problems caused by problematic drug use, supporting the Safer Bromley Van (providing security upgrades to victims of crime and the vulnerable). Finally, the officers are responsible for providing support to Neighbourhood Watch within Bromley and other initiatives to recruit and support volunteers in work to make Bromley safer.

£29,500 (Contribution to costs - additional funding will be provided from within the Portfolio Holder for Public Protection and Safety's budget).

## **3. Domestic Abuse Strategy Co-ordinator**

Leading and facilitating the proactive borough-wide partnership response to domestic abuse i.e. to support victims and survivors and to bring to justice and rehabilitate perpetrators. Along with managing three multi-agency services the coordinator has responsibility for the development and delivery of the Domestic Abuse Strategy, managing the Domestic Abuse Forum and its associated Steering Group, and providing consultation and training to other professionals and community groups.

The funding would support the Council's prioritisation of interventions to reduce the harm caused by domestic abuse within Bromley and the Independent Domestic Abuse Advocacy project.

£43,000 (Funding to cover salary and associated expenditure).

## **4. Young Victim's Project**

This allocation provides part funding for a dedicated youth victim project within Victim Support in Bromley. The project has a dual emphasis on working with young victims of crime (both within schools and in the community) whilst also seeking to recruit a younger cohort of volunteers in an effort to make victim support services more accessible to young people.

£8,200 Contribution to costs of dedicated youth support project delivered by Victim Support

Sub Total = £113,600

**Services previously funded through the Home Office element of the Young Peoples Substance Misuse Grant (total figures have been reduced in line with assumptions applied relating to Community Safety Fund).**

#### **5. Teenage and Parent Support Service**

The Drug Action Team through London Borough of Bromley commission a joint funded post in collaboration with Children and Young People's Services to prevent young people from entering public care. The post specifically works with young people who have substance misuse problems as well as addressing related offending behaviour. The post also develops, in partnership with Integrated Youth Support and Youth Services, diversionary activities and facilities that are accessed by young people as a focussed approach to move young people away from crime and into positive activities. This may include access to employment, training and extended educational programmes with input from youth services etc.

£9,455 (Contribution to costs of full time post).

#### **6. Bromley Young People's Substance Misuse Service**

The aim of the service is to discourage children and young people from substance misuse with the focus to support them to abstain from substances and tackle substance misuse related crime. This is achieved through a proactive approach to promoting accurate prevention messages regarding all aspects of drug and alcohol use, physical and psychological health and social functioning and offending behaviour. This is delivered through the service's work in schools and colleges and through social marketing campaigns.

The service also works closely with the Youth Offending Team to deliver appropriate interventions as part of a package of care to young people that are placed on a Drug Rehabilitation Order or where it is deemed that substance misuse is a significant factor within their offending behaviour.

£17,295 (Contribution to service)

**Total Budget Allocation = £140,350**

I look forward to the confirmation and release of the funding allocation for Bromley. I understand that the funds will be released in a single payment at the start of the financial year and that we will provide a brief updates on progress during the year.

Yours Sincerely

Clive Davison  
Assistant Director, Public Protection and Safety

This page is left intentionally blank

<b>Meeting:</b>	<b>Safer Bromley Partnership Strategic Group</b>
<b>Date:</b>	<b>8 March 2012</b>
<b>Subject:</b>	Safer Bromley Awards De-Brief
<b>Author:</b>	Colin Newman, Head of Community Safety colin.newman@bromley.gov.uk

## 1 SUMMARY

- 1.1 This report provides a brief overview of the Safer Bromley Awards event held on Thursday 2 February. In addition to acknowledging the winners of awards, the report seeks authorisation to undertake a formal survey of those who attended in order to validate the event. Findings from the survey will be presented at a meeting of the Partnership.

## 2 RECOMMENDATION

- 2.1 The Strategic Group is asked to
- Note the event and request a formal “survey” of stakeholders.
  - Request that the Chairman of the Partnership write a letter of formal thanks to Ward Security for providing sponsorship for the event.
  - Note the list of winners in each category.

## 3 BACKGROUND INFORMATION

- 3.3 The Safer Bromley Partnership hosted the annual Safer Bromley Awards ceremony on Thursday 2 February 2012. As in previous years the event was hosted by the Portfolio Holder for Public Protection and the Borough Commander. The names of the award winners are listed below:

**Working Together (Introduced by Councillor Douglas Auld)**

Police Sergeant Dave Morbin  
 Friends of Biggin Hill Parks  
 Dan Nurse (Ward Security)  
 Bill Lines (Enviro-Crime Officer, LBB)  
 Glades Security and Bromley Police Town Centre Unit

**Above and Beyond (Introduced by Nigel Davies)**

Bromley CCTV Unit  
 Charlotte McLeod (Bromley Youth Service)  
 Lorraine Leon (Bromley Victim Support)  
 Tricia Shine & Jenny Wait (Bromley Mentors)  
 Kate and Lana (Bromley Freedom Programme)

## **Community Champion (Introduced by Ian Smith)**

Ann Jones (west Wickham)

Roxanne Cleary & Brian Oxley (LBB Trading Standards Nomination)

David Hines (Bromley Common & Keston)

Bethany Archer & Nathan Bird (Farnborough & Crofton)

Rev Nick Read (Penge & Cator)

- 3.4 For the first time, sponsorship was accessed to support the event. Ward Security provided funding to support the event and it is proposed that the Portfolio Holder compose a formal letter of thanks to the Managing Director at Ward Security thanking him for the support available.
- 3.5 Finally, it is proposed that those attending the awards evening in 2012 are surveyed in order to provide feedback on the event. Once complete, a report will be presented to the Safer Bromley Partnership outlining the findings and recommendations for future events.

## Bromley TRYangle Pilot Project Referral Form

*This pilot will run from April to July 2012 and referrals will be accepted from mid-February to mid-April.*

**Please ensure ALL details are entered fully to avoid delays in processing.**

Once completed please email to [lyla@tryangle.org.uk](mailto:lyla@tryangle.org.uk)

TRYangle provides two parallel services designed to reduce the occurrence of domestic abuse and its devastating effects on survivors and children by provides a service which works with both perpetrators of domestic abuse and supports their partners or ex-partners.

### Services for men:

- Assessment: to ensure that the programme is suitable, that the perpetrator has the commitment necessary and to ensure he gives informed consent.
- Group work: 12 group sessions exploring the nature of violence and abuse and widening the focus to understand other forms of abuse.
- Individual work: all men will be offered up to 20 sessions of one-to-one counselling.
- It is mandatory for all men to give the contact details of their current or most recent partner in order to be accepted onto the programme.

### Services for women:

- Pro-active contact: all current or recent partners of men accepted onto the programme are contacted and offered support, including promoting realistic expectations of our work with their (ex)partner.
- Group work: women are offered 12 group sessions to support them in their understanding of domestic abuse
- Individual work: all women will be offered up to 20 sessions of one-to-one counselling.
- Telephone support: support workers will be available for support, advice and safety planning throughout the programme.
- Ongoing focus on safety: throughout the programme professionals working with the men and women will be in contact to manage any emerging risks.

Please note that this pilot will be subject to external evaluation and all participants, including referrers, may be asked to take part in an ongoing study. This is not fundamental to being accepted onto the programme and participants can withdraw from the study at any point should they wish.

### **IN ORDER to refer a case for the pilot programme the following criteria needs to be considered:-**

- a) The pilot programme is currently only able to accept referrals where the perpetrator (client) is male. It is hoped if the project is able to be extended that female perpetrators may also be offered support.
- b) Either the client or his (ex)partner should normally reside in Bromley.
- c) Client is able to acknowledge his use of violence (physical or psychological), and is therefore not in total denial of his abusive behaviour;
- d) Client is able to see that his abusive behaviour is a problem in and of itself;
- e) Client is able to accept responsibility for ending his abusive behaviour and shows a willingness to engage with the programme;
- f) His attendance is not likely to increase significantly risk of further violence/abuse towards his (ex)partner, his children or others;

- g) The client does not have anger management difficulties i.e. he does not have a history of violence towards people other than his wife.
- h) Where there is no history of the client using high risk, potentially lethal behaviours (e.g. use of weapons, strangulation, sexual violence, violence during pregnancy);
- i) There is some understanding from the client about the impact on the child(ren) (if any) of the domestic violence;
- j) The child(ren) (if any) want contact;
- k) There are no complicating factors such as the client having mental health issues or substance misuse issues which may impact on him benefiting from the programme.
- l) The client is aware of and consents to the referral to TRYangle being made.
- m) **It is not appropriate for men to be mandated to attend the programme, and places cannot be guaranteed as all men must be assessed for suitability.**

**PLEASE NOTE:**

TRYangle will advise the referrer when:

- a. clients have completed their suitability assessment; and
- b. if clients have been accepted onto group programme (also, if not, why not).

Brief updates on your client can be emailed to you on request. Updates will provide information on:

- c. the number of sessions attended,
- d. sessions missed and reasons why,
- e. general engagement, and
- f. if client terminates early or successfully completes the programme.

***TRYangle is unable to attend child protection conferences.***



**TRYANGLE PROJECT**  
**AGENCY REFERRAL FORM**

Date copied to Support Services	
Support Services Client Code	
Perpetrator Services Client Code	
<b>Family Number</b>	F

Date of referral:	<b>BROMLEY</b> Organisation:		
<b><u>Referrer Details</u></b>			
Address:			
Post code:			
<b>Contact name:</b>			
<b>Tel:</b>	<b>Ext:</b>	<b>Email:</b>	

<b>Woman's name:</b>	<b>Man's name:</b>
Date of birth:	Date of birth:
Ethnicity:	Ethnicity:
Address:	Address (if different):
Home phone:	Home phone:
Mobile/work phone:	Mobile/work phone:
GP details:	GP details (if different):
<b>Current Partner (If different from above)</b>	
Date of birth:	Address:
Ethnicity:	
Phone/Mobile:	

Contact instructions and availability:

**Current living arrangements (e.g. co-habiting, married, separated, divorced, live alone):**

**Children – names, ages:**

**Children – custody and contact arrangements:**

Court dates, charges, child protection/contact dates etc.:

Please give an outline of any violent or abusive behaviour and concerns for his partner/ex-partner and children:

Where courts are involved - please provide court bundle or findings. Provided?

YES

NO

Please give details of any other agencies involved:

Has client been diagnosed with a mental health illness? YES / NO  
*Please give details of any concerns:*

**Any additional notes:**

For TRYangle office use			
Woman's pack sent?		Yes	No
Type and frequency of contact with man			
Date of assessment:		Accepted	Yes No
Date of first group:		If rejected, why:	
Date(s) referrer has been updated on man's engagement – (Name of Worker)?		1. 2. 3.	
Number of group sessions attended:		Date of completion or reason for drop out:	
Counselling requested	Yes	No	Counsellor's name:
Date of counselling assessment:			
Type and frequency of contact with woman			
Phone contact:		One-to-one contact:	
Support groups:		Workshops:	
Counselling requested	Yes	No	Counsellor's name:
Date of counselling assessment:			
Notes:			

## Thanks!



When I took up the reins of the Safer Bromley Partnership again nearly a year ago, I said that one of my priorities was to thank members of the partnership

from key agencies, volunteers and Community leaders for their efforts over and above the call of duty to keep Bromley the, clean, pleasant, safe place that we all enjoy.

True to my word colleagues came together last month at the Safer Bromley Awards to honour our unsung heroes. I had great pleasure in introducing our new Police Borough Commander as she joined me in presenting the awards on the night. And what an emotional occasion it was too! The winners had no idea who had won until the night and the applause for every single one of them is still ringing in my ears. Well done to all – you deserved the recognition.

### Cllr Tim Stevens

Chairman, Safer Bromley Partnership



The proud award winners on the night

## saferbromley Awards

## Community Heroes honoured

Last month's Safer Bromley Awards recognised our community champions for their selfless contribution to the borough.

Five winners in each of three categories were presented with trophies by Safer Bromley Partnership Chairman Cllr Tim Stevens and Police Borough Commander Steph Roberts.

Winners in the **Community Champions** category ranged from two young people from the sixth form of Darrick Wood Secondary School who worked closely with their local Safer Neighbourhood Team to represent young people and put forward fresh thinking on how to tackle antisocial behaviour to a local Reverend who has done so much for the homeless.

to capture footage and close ups of the perpetrators. Other winners included a youth worker and a volunteer for victim support.

Awards for **Working Together** went to Plaistow, Sundridge and Bickley's Safer Neighbourhood Sergeant; Friends of Biggin Hill Parks; Ward Security who run Bromley's park dog handler team and the Glades Security team among others.



Working Together



### Welcome to our new Police Borough Commander Steph Roberts

"It's with great pleasure that I take up the post of Borough Commander for

Bromley. Undoubtedly this is a high performing borough with a high public satisfaction rate and this clearly hasn't happened by accident - it is down to the professionalism, hard work and commitment of the people working here. Although this is a temporary post for me there will be no complacency and we need to continue to improve performance and keep those standards high. I have a vested interest in keeping the borough safe as a local resident and I feel strongly about local issues."



Community Champions

In the **Above and Beyond** category, the Council's CCTV department was recognised for its work during the disorder

Whether named as an award winner or not each and every person in the room was valued and recognised for their supreme efforts to keep Bromley such a clean and safe place for all to enjoy.



METROPOLITAN POLICE

Working together for a safer London



THE LONDON BOROUGH

# That's Life

**Young people from Bromley borough have had a real taste of what it is like to be part of an emergency services team during an intensive five-day course with London Fire Brigade funded by the Safer Bromley Partnership.**



They were put through their paces at Lee Green Fire Station in front of families and friends at a 'passing-out' demonstration following their participation in the Fire Brigade's demanding 'Life programme' which offers the opportunity to learn fire fighting skills alongside real fire fighters.

During the course, young people are given personal responsibility for the management and maintenance of a fire engine, firefighting equipment, the fire station and their own personal protective equipment. They also attended workshops on fire safety, first aid and the consequences of starting deliberate fires.

## More to mentoring

**More young people than ever will benefit from advice given by keen adult volunteers to the borough's mentoring programme thanks to extra support from the Safer Bromley Partnership.**

Sixty new mentors have signed up since the partnership announced extra funding last year. The process of matching them to groups of young people identified as at risk of developing anti-social behaviour is now under way. Mentoring acts as a positive diversion for young people to reduce such behaviour.

Jane Belding, who runs the programme for Bromley Council, said: "Mentors undergo police checks and rigorous training, but what is most important is that they are caring individuals who genuinely want to give back some of their life-skills and experience to young people who will benefit from this kind of guidance in their lives.

More information about the programme is available on the [Council's website](#)

## Rogue trader round up

Trading Standards have saved thousands of pounds of residents' money by intervening when they have been targeted by rogue traders.

If you see anything suspicious or are targeted yourself contact the team straight away.

Find out more **rogue traders**

**Trading Standards Rapid Response**

**07903 852090**



## Man with a van

*"The carpenter was very nice - I feel a lot safer in my home."*

*"This service is vital - it may save someone's life"*

*"Thank you for your support - me and my son didn't expect it"*

Three comments from victims of crime who received upgrades to home security provided by the Safer Bromley Van. The Victim Support carpenter visits homes to fit locks, chains, spy holes and other crime prevention devices to make those who have suffered a crime in their home feel safe again.

If you need support following a crime contact your local Safer Neighbourhood Team or Victim Support Bromley **020 8776 7071.**



## Get on site

Neighbourhood Watch is delighted to announce a brand new website which will provide a wealth of ideas, help and advice on staying safe in your local

neighbourhood.

London's volunteer representative Alfred Kennedy said: "Check out the site as it builds into a one-stop-shop resource for Neighbourhood Watch co-ordinators and householders throughout the borough.

Visit [www.ourwatch.org.uk](http://www.ourwatch.org.uk)

## Clean sweep through crime and grime



Affinity Sutton and the local police safer neighbourhood team joined the Council's Public Protection team, Area Management and Park Rangers teams during a day long clean up on the Mountfield Estate

*"I've agreed to support a number of multi-agency operations such as this to reduce complaints, improve hygiene and cleanliness and reduce crimes*

*involving motor vehicles, arson and criminal damage, while enhancing the quality of life for residents,"* said Public Protection and Safety Portfolio Holder Cllr Tim Stevens.

During the day, the Council and Affinity Sutton washed 28 sq metres of graffiti and smoke damage and disposed of more than twelve lorry loads of rubbish and old furniture, 56 large sacks of litter, and even an entire mature tree trunk felled and concealed in an alleyway!



## Bromley Community Engagement Forum

PO Box 34 Beckenham Kent BR3 4ZN Telephone/Fax: 020 8658 7168

E-mail: [info@bcef.org.uk](mailto:info@bcef.org.uk) Website: [www.bcef.org.uk](http://www.bcef.org.uk)

Company Limited by Guarantee Number 7070498 Registered Charity Number 1133450

### MINUTES OF A PUBLIC MEETING HELD ON WEDNESDAY 30 NOVEMBER 2011, 7PM BROMLEY FOOTBALL CLUB

#### **BCEF MEMBERS PRESENT** (SNP = Safer Neighbourhood Panel)

Judith Cross (BCEF Chair)

Ian Smith (BCEF Exec member)

Mahmood (BCEF Executive; Multi Faith)

Brenda Thompson (BCEF Executive, Mental Health Forum, Cray Valley East SNP)

Michael Lever (BCEF Executive and Bromley Residents Federation)

Dave Freeborn (BCEF Exec member)

Bruce Tompson (BCEF Exec member)

Alf Kennedy (BCEF Exec member, Cray Valley West SNP, BNWA),

Nell Riehl (Honorary Member)

Howard Clark (Honorary Member)

Cora Green (Bromley Victim Support)

Margaret Gubbins (Independent Custody Visitors Panel)

Terry Belcher (Bromley Link)

Mark Lapper (Sundridge Park SNP)

Peter Toy (Clock House SNP)

David Ely (Chislehurst SNP)

Sally Bettsworth (Mottingham & Chislehurst North SNP)

Val Harrison (Kelsey & Eden Park SNP)

Barbara Jarvis (Hayes & Coney Hall SNP)

Mark Diplock (Keston & Bromley Common SNP)

Geoff Newton (West Wickham SNP)

Bernard Waine (Darwin SNP)

Ray Bell (Street Pastors)

Ed Cobby (Chelsfield & Pratts Bottom SNP)

Raymond Langford Jones (Shortlands SNP)

Julian Melfi (Copers Cope SNP)

Jenny Coleman (Penge & Cator SNP)

Sandie McGarey (Bromley Women's Aid)

John Bruce (Bickley SNP)

Steve Dilworth (Bromley Town SNP)

Sue Polydorou (Petts Wood & Knoll SNP)

Patrick Cracroft-Brennan (Crystal Palace SNP)

Amanda Evans (BCEF Operations Manager)

**SAFER BROMLEY PARTNERSHIP STRATEGIC GROUP MEMBERS PRESENT:**

Charles Griggs (Police, Borough Commander)  
Andrew Holcombe (Fire, Borough Commander)  
Cllr Tim Stevens (Portfolio Holder Community Safety)  
Nigel Davies (LBB Council)  
James Cleverly (Metropolitan Police Authority/London Assembly)  
Paula Morrison (Bromley PCT)  
James Rounph (Affinity Sutton)

**Also Present:** Roger White, Angela Wilder, Peter Sibley (Anti Social Behaviour Co-Ordinator), Rob Vale (Trading Standards), Peter Ward, Jennifer Gordon, Cheryl Mulryne (P&SP SNP), James Ellis (Clock House SNP), Pushpa Hillman (Keston & Bromley Common SNP), Peter Hodges (Hayes & Coney Hall SNP), Val Bowley (Cudham RA), Ann Taylor, James Fowler (Link), Craig Archer, Maura Tompson, Marsha Berg (CCARA), Inder Sharma, Terry & Jacqui Giles (MV&PH Rd RA), Andy Mills, Joe Kerr (Dawin SNP), Monica Fowler (BNW), Trevor Irwin (WW SNP), Nicholas Bennett, Nason Maani (Bromley Bahai Community), Derek Swatton, Peter Seymour, Linda Kennedy, Anousha Vahdaty, Jim Jamaspian, Chris Riches, Mr & Mrs Armstrong, G.Williams, P.Hogan, Sue Harrhy, E.Ledgen, Brian Evans, Mr & Mrs Bunse, Kathy Bunce, Jennie Clark, Tony Cross, H.Kale, Stephen Davies, Martin Hickman, Mr & Mrs Tullet, Mr & Mrs Richards, D.Fieldman, Florence Atkins, Amanda Davies, Roger Hewitt, Sue Craney

**MEMBERS APOLOGIES FOR ABSENCE:** Lulu Pearce (Community Advisory Group), Clifford Longley (NWA); Sarah Walker (MPA); Neil Miller (Orpington SNP), Roger Taylor (Honorary Member and Penge Partners).

**No apologies/representation** for: Biggin Hill SNP, Farnborough & Crofton SNP, LGBT.

1. **CHAIRMAN'S WELCOME AND INTRODUCTION:** Judith Cross explained the purpose of the meeting and introduced the Partnership members (as listed above) who are available to take questions.

Judith explained that this would be her last meeting as Chair of the BCEF in view of her imminent move to South Africa. As Vice Chair, Ian Smith will take on the role as Chairman with immediate effect.

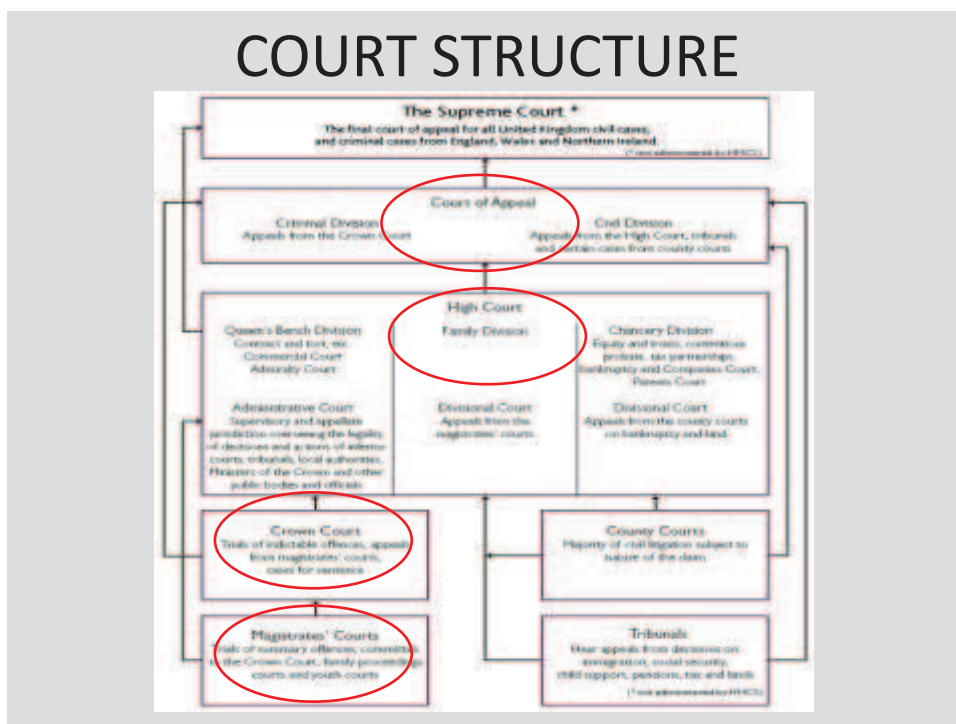
Thanked the following for hosting information stands at this event to increase public awareness:

Cora Green – Bromley Victim Support  
Peter Warne - Safer Neighbourhood Development Officer  
Rob Vale – Trading Standards  
Teri Moore – Bromley Women’s Aid  
Michael Taylor - Shared lives team (Homes for vulnerable adults)  
Jennifer Gordon - Lewisham & Bromley Local Immigration Team  
Anousha Vahdaty - Bromley Bahai Community



2. **NEW EXECUTIVE MEMBER:** John Bruce (Bickley SNP Chair) is currently a Special Advisor to the Executive Committee on Safer Neighbourhoods and with Judith's departure requiring a lead for Safer Neighbourhoods, members were asked to vote for John to become a full Executive Member for the timeframe up to July's AGM. Members voted unanimously in favour of John's appointment to the Executive Committee.
  
3. **MAGISTRATE PRESENTATION:** Presented by Roger White (Deputy Bench Chair for the South East London Justice Area) and Angela Wilder (Legal Team Manager) explaining the role of the Magistrate.

Explained the Court layout where everyone is positioned in the room and the court structure below - from the Supreme Court, Court of Appeal, High Court, Crown Court, Magistrate Court:



The Magistrates Court deal with: Youth Courts; Family Courts; Adult Courts.

# WHAT DO WE DO?

CIVIL MATTERS EG NON PAYMENT OF COUNCIL TAX & NON SCHOOL ATTENDANCE

AUTHORISE SEARCH, ENTRY OR ARREST WARRANTS

HEAR VIRTUALLY ALL YOUTH CASES

PRESIDE OVER TRIALS AND DECIDE ON GUILT OR INNOCENCE

PASS SENTENCE EITHER ON A GUILTY PLEA OR GUILT AFTER A TRIAL.

DECIDE ON ISSUING BAIL OR REMAND IN CUSTODY

ENFORCEMENT OF FINANCIAL PENALTIES

DETERMINE APPROPRIATE VENUE FOR A CASE TO BE HEARD

COMMIT DEFENDANT TO CROWN COURT FOR TRIAL OR SENTENCE

VISIT, SCHOOLS, ROTARY CLUBS AND PUBLIC FORUMS

## ADULT CASES



**+ 97%**  
are finalised in the Magistrates Court



**+ 99%**  
are finalised in the Magistrates Court

## ALL YOUTH CASES



**+ 99%** are finalised in the Magistrates Court

## TYPE OF OFFENCES

TRIAL ONLY  
SUMMARILY

These include Offences like, Animal Cruelty, Harassment, Public Order, Fare Evasion, School Non-Attendance, Vehicle Interference & Vehicle taking without consent.

TRIAL EITHER  
WAY

Drug offences, exposure, Fraud, Handling stolen goods, Sexual Assault And shop lifting. Additionally, Dangerous driving or causing death By careless or dangerous driving.

INDICTABLE ONLY

These are the most serious offences, Murder, kidnapping and rape etc. Our Involvement here is committing the defendant for trial to the Crown Court.

## STRUCTURED DECISIONS

WHERE DO WE START ?

- 1 – IDENTIFY THE COMMITTED OFFENCE AND UNDER WHICH ACT
- 2 – CLARIFY THE NATURE OF THE ACTIVITY
- 3 – ESTABLISH THE STARTING POINT
- 4 – IDENTIFY THE RANGE OF THE SENTENCE
- 5 – TAKE INTO ACCOUNT MITIGATION OR AGGRAVATING FACTORS
- 6 – LISTEN TO OR READ OTHER INFORMATION
  - Previous Convictions
  - Pre-sentence report
- 7 – DECIDE ON THE APPROPRIATE SENTENCE AND GIVE REASONS

**Sentencing:** Each Magistrate is issued with a Definitive Guideline manual: “Magistrates’ Court Sentencing Guidelines”, which lists the range of sentencing the Magistrate is able to give for each specific offence and the considerations/factors that need to be addressed when sentencing.

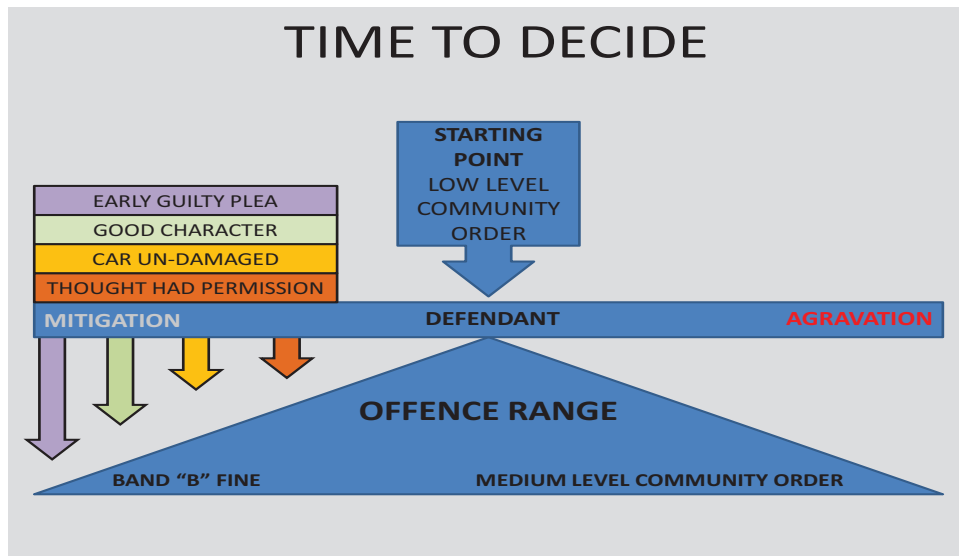
Showed an example about **Vehicle taking without consent** and the relevant page of the manual gives the starting and maximum point for sentencing when taking considerations into account, such as: who owned the car (stranger/employer/ relative etc); any damage caused to lock/ignition; taken from private premises etc.

Each consideration can affect the range of sentence but cannot exceed what is stated in the Manual:

## AVAILABLE SENTENCES

DISCHARGE	OFFENCE RECORDED BUT NO ADDITIONAL PENALTY IS MADE
CONDITIONAL DISCHARGE	CONDITIONAL THAT NO FURTHER OFFENCES ARE COMMITTED
FINANCIAL PENALTY	FINE IMPOSED NORMALLY BETWEEN 50% AND 150% OF RWI
POINTS & DISQUALIFY	MAINLY MOTORING OFFENCES
COMMUNITY ORDER	SPLIT INTO LOW, MEDIUM AND HIGH ORDERS + REQUIREMENTS
CUSTODY	UP TO 6 MONTHS, BUT CAN BE SUSPENDED WITH REQUIREMENTS
CROWN COURT	COMMIT TO CROWN COURT FOR SENTENCING

INFORMATION	
OFFENCE	TAKING WITHOUT OWNERS CONSENT
ACTIVITY	EMPLOYERS CAR
START POINT	LOW LEVEL COMMUNITY ORDER
RANGE	BAND "B" FINE TO MEDIUM LEVEL COMMUNITY
AGGRAVATING FEATURES	NONE - ALTHOUGH POLICE INVOLVED
MITIGATION	1 – MISUNDERSTANDING THOUGHT HAD PERMISSION
	2 – CAR RETURNED SAFELY AND WITHOUT DAMAGE
	3 – EARLY GUILTY PLEA
	4 – DEFENDANT OF PREVIOUS GOOD CHARACTER



Other scenarios were discussed such as taking without owners consent but from private premises which the starting point for sentencing would be 'High Level Community Order' instead of the above 'Low Level Community Order'.

**Appeals:** Any defendant not happy with the Magistrate's decision on verdict or sentence can appeal to a Higher Court. However, of all those cases finalized in a Magistrate's Court fewer than 1% are ever appealed. Of those 1% fewer than 30% are upheld ("So we, as a body of Magistrates, get it right a lot more time than we get it wrong").

**QUESTIONS:** Questions related to the perception of lenient sentencing and reviewing sentencing guidelines.

Mr White is happy to take further questions – please contact Amanda who will forward your questions: [amanda.evans@bcef.org.uk](mailto:amanda.evans@bcef.org.uk)

- 4. POLICE/PARTNERSHIP UPDATE ON THE DISORDER INCIDENTS IN THE BOROUGH:** Presented by Chief Superintendent Charles Griggs, Cllr Tim Stevens and Nigel Davies which explains the Police and Council's response.

A DVD was shown of the disorder incidents that took place around Bromley High Street on the night of 8 August (West/East Street and The Mall). Overall, rioting took place in Bromley, Beckenham High Street, Orpington (The Nugent Centre). The CCTV Control Room were able to provide 2,500 hours of footage which the Police are using to identify the suspects (close up shots of the looters as well as details of any vehicle used). These CCTV images have been published via the Newshopper/police website/large screens in the Glades. 57 properties were damaged. 84 people have been arrested for Bromley Borough offences, 18 convictions to date.

**Immediate Police Response:** Bromley police contained the situation during Monday night, given that many of their officers were deployed in other parts of London as Bromley was not expecting any serious issues.

**Council Response:** Set up a Borough Emergency Control Room (BECC) with a hot line between the BECC and the Operations Room at Bromley Police Station. The Chief Executive, Emergency Planning Officer and a small team from Bromley were on call for London during the entire time. Environmental Services cleared up the mess thereby preventing the debris from being used as missiles in any further disorder. LBB funded additional patrols of Ward Security to support the police to maintain a heightened level of presence and visibility.

There were many unfounded reports about further violence and looting on Tuesday which created a culture of fear and unrest across Bromley borough especially in light of the terrible events the night before in Croydon. Rumours of further violence flourished and although they were totally groundless, people started to act on them with businesses closing in their locality.

The Council are planning an approach for on-going support to businesses and have included relevant information for businesses on the Council's website. Also helped with temporary emergency accommodation for those affected by the fires in Croydon.

Throughout these events regular communication was maintained from the Police and the Council through a wide network of partners to give information about the ongoing situation and also provide reassurance that the situation was under control. Tim Stevens spoke about the important role that the BCEF played in this and discussed a new Communication Team that the Council will set up to which the BCEF will be invited to participate.

Bromley's Fire Brigade were highly praised as the crew were also involved in assisting Croydon and put their lives on the line on more than one occasion.

Praise was also given to Bromley's CCTV Control Room Manager who had finished her shift and returned to assist her colleagues.

## QUESTIONS:

- a) Praise for the Police and Council with the way they handled the situation.
- b) How effective in finding the looters have the CCTV images been?  
Excellent, over 2000 images in Bromley alone. Charles Griggs mentioned there were still some identification issues. (Addendum: This is because of the face coverings that cause a problem and in the absence of admissions, proving that the person in the image is the person detained. The LBB CCTV system is excellent).

Addendum: The following questions received about CCTV:

- Is the identification issue due to poor images or purely because the masks etc that the people were using? If the issue is poor images then does the council have any plans to update the equipment to obtain better images to assist in any future investigations?
- Are there any plans to increase the areas covered by CCTV.
- Why cannot the TFL cameras already in place in West Wickham to enforce the red route also be used for obtaining evidence to assist the police?

### **Reply from Jim McGowan, Head of Environmental Protection, LLB:**

Some of the identification issues may relate to image quality but we do not have any plans to update the hardware of our system. However, it is also apparent that most of the identification problems relate to masks etc., and the Police are employing various different software applications to get around this.

With regard to the TFL cameras in West Wickham, the police can obtain CCTV footage at any time from TFL. With regard to the Council use of these cameras, TFL are willing to enter into a sharing protocol but it was decided that it was not cost effective and we have not progressed this.

The Council is not currently considering any expansion of the LBB CCTV system unless it can be achieved within existing resources.

- c) Jennifer Gordon (Bromley & Lewisham Immigration Team) thanked the Police for forwarding looters names to them.
- d) A discussion ensued about warning signs/patterns/intelligence gathering and whether the problems should have been addressed before it got out of hand in London and what lessons have been learned. James Cleverly felt that we do not encounter this wide spread disorder often and is a rarity. With images of looting being broadcast widely by media coverage

looters (who in some cases were respectable people never been in trouble with the Police before) felt this gave them the green light to take what they want. There will be more officers trained to deal with Level 2 Riots in case this happens again and London is better prepared. The message is out there that if you participate your image will be widely circulated, you will be found and you will be arrested.

- e) Concerns were expressed that policing will be thin on the ground because of the Olympics. James Cleverly said that this is being addressed and the plan is it will be almost business as usual. He added that it will not be as disruptive as some reports indicate and officers can be brought in from the Home Counties.

#### **5. ANY OTHER BUSINESS:**

- Judith thanked everybody for their support to the BCEF. She also thanked Rachel Evans for regularly helping out at the BCEF meetings and assisting with the powerpoint presentations.
- This is also Charles Griggs last meeting with the BCEF as the Borough Police Commander before his move to Southwark.

Cllr Tim Stevens, on behalf of everyone, thanked Judith and Charles for all their hard work.